

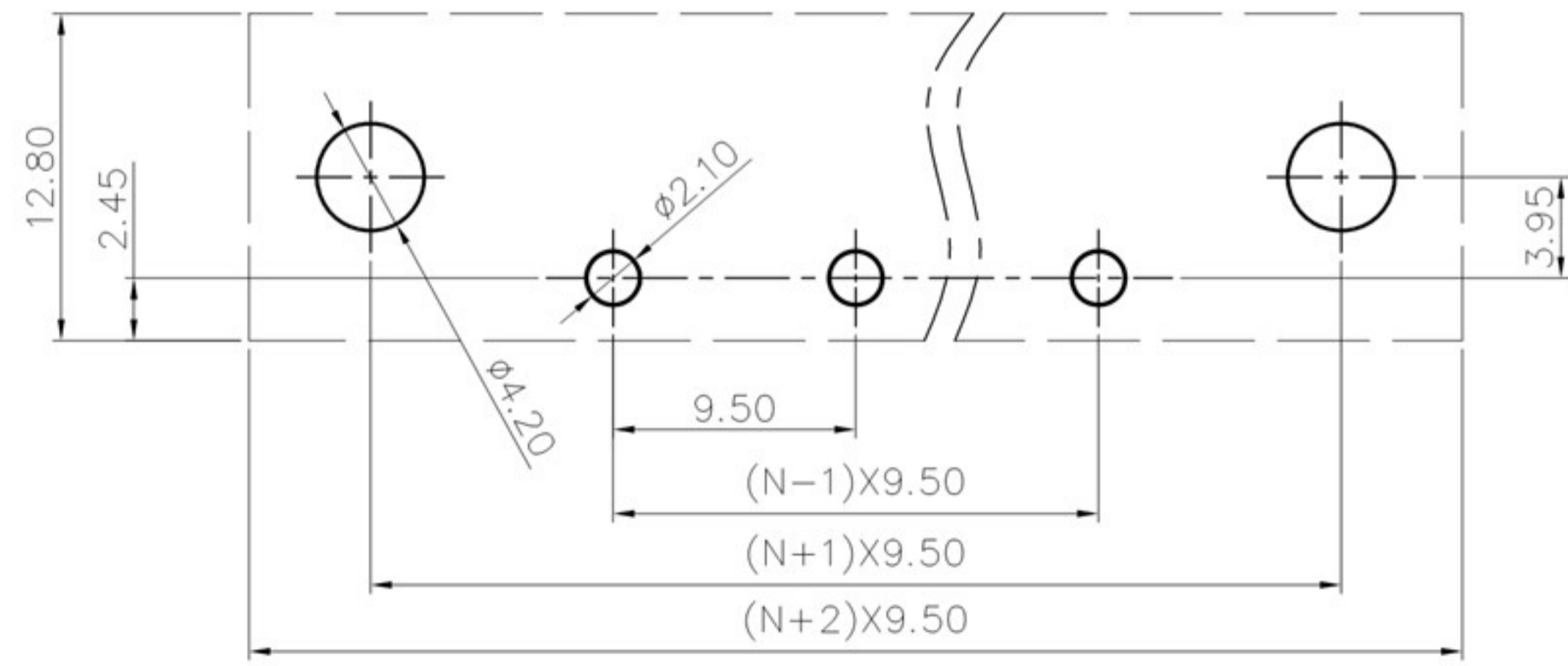
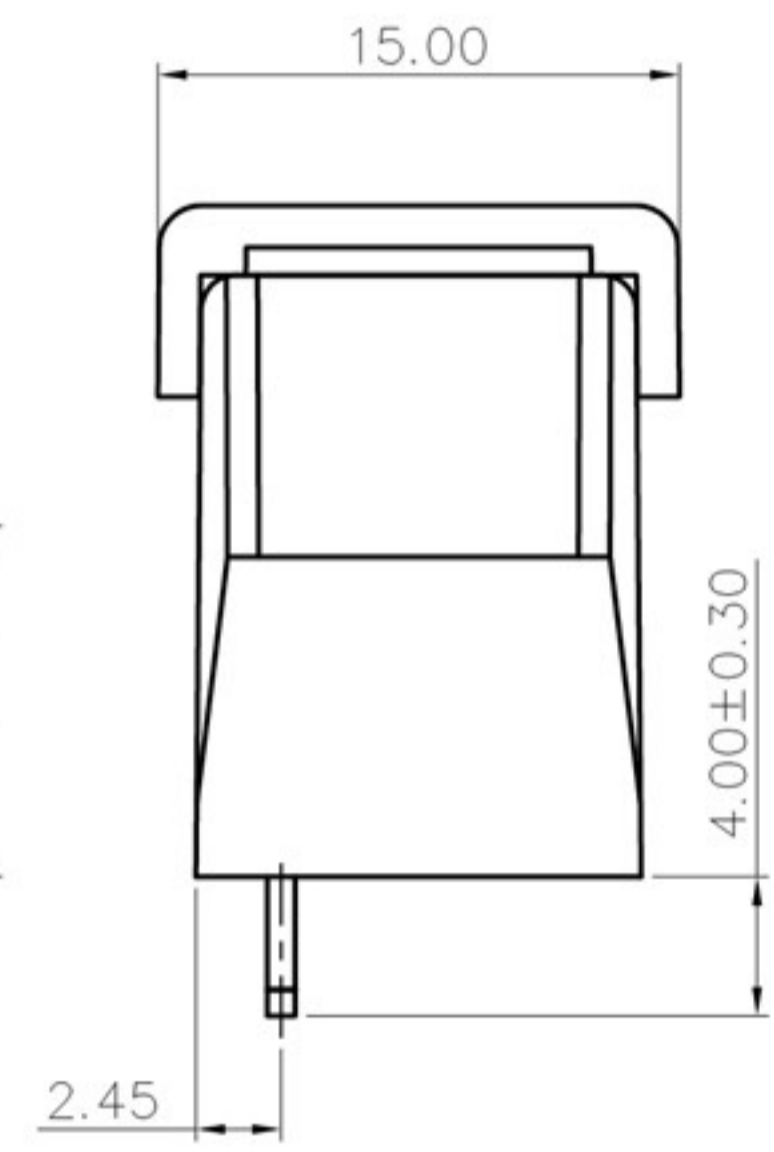
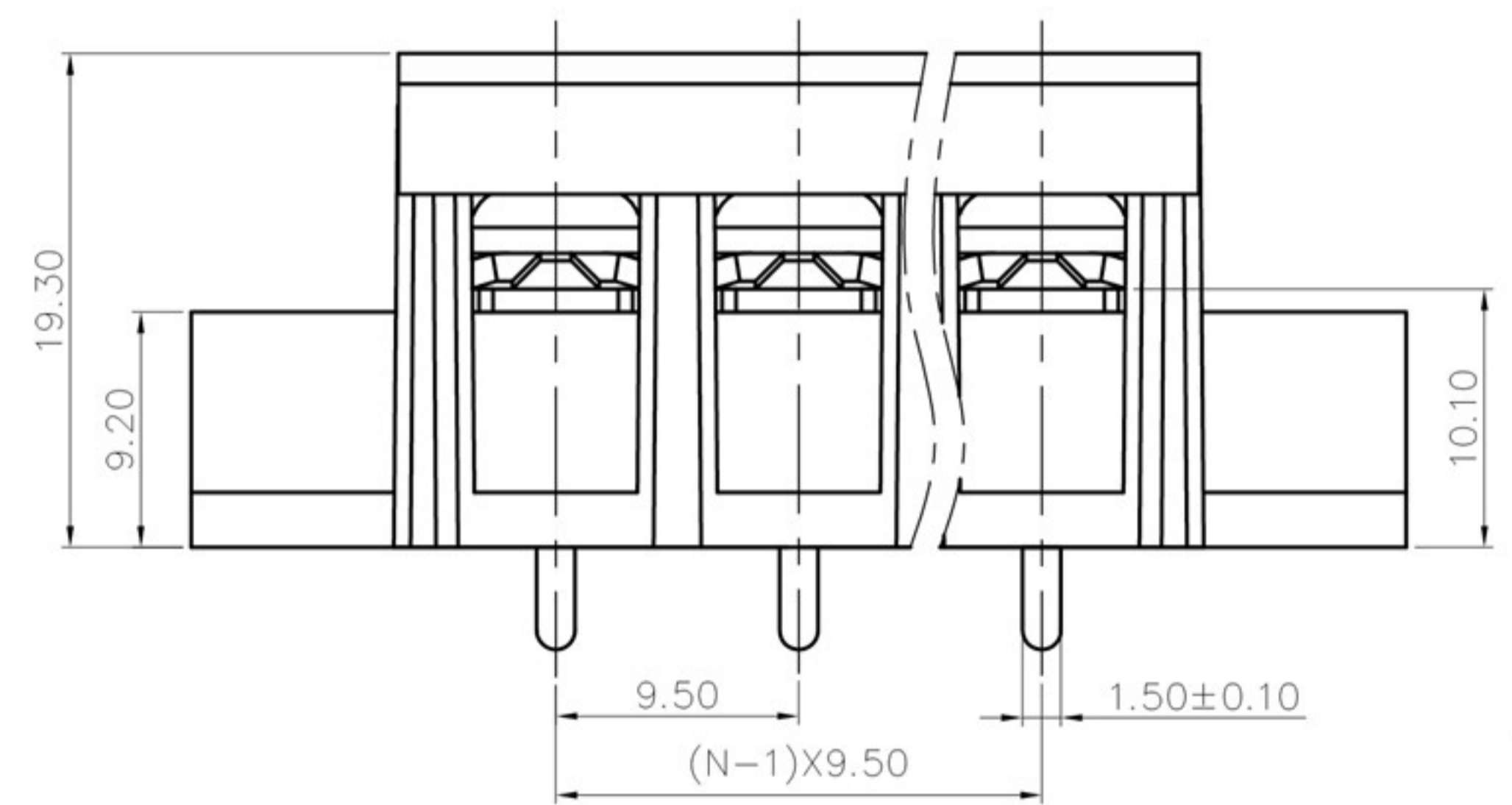
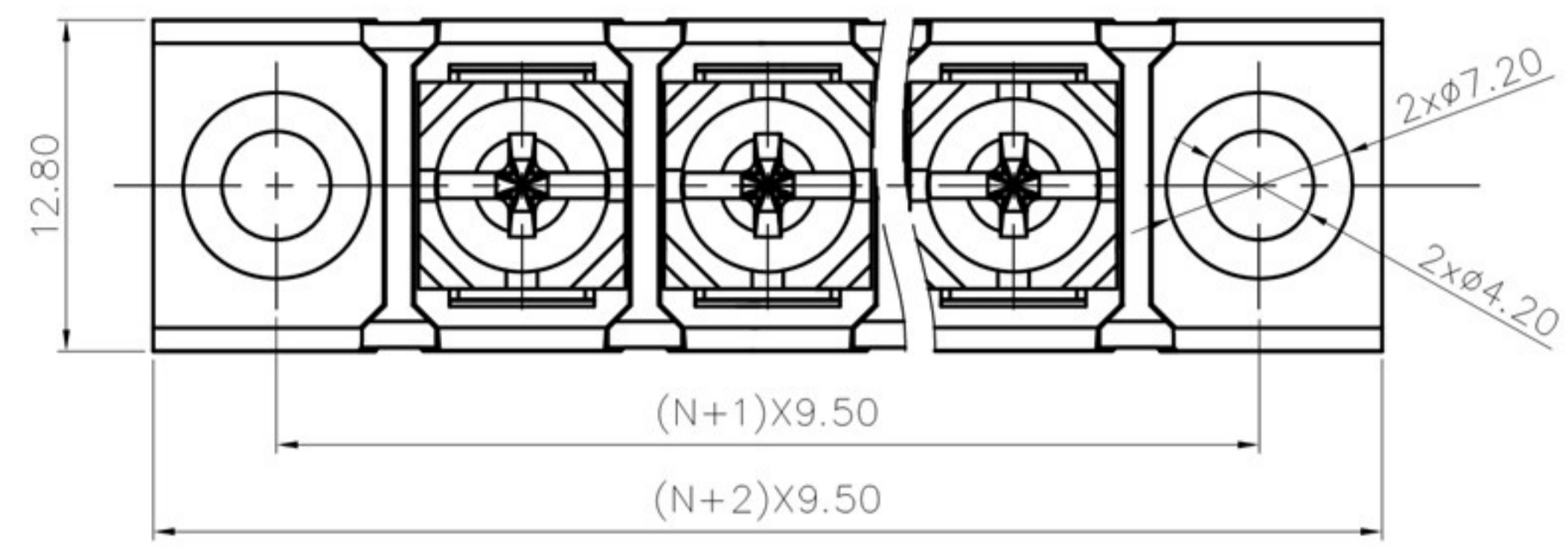
7 6 5 4 3 2 1

REVISION RECORD				
REV	ECN	DESCRIPTION	DRFT	DATE

H
G
F
E
D
C
B
A

H
G
F
E
D
C
B
A

(W/O COVER)



NOTES1:

- UL Standard
- 1. Rated voltage/current : 300V / 20A
- 2. Torque value : M4 , 10.53Lb.in
- 3. Wire range : 22~12AWG

NOTES2:

- 1. Dimension shall be interpreted per ASME Y14.5-2009
- 2. Pitch : 9.50mm, Poles : N=02~20P
- 3. Withstanding voltage : AC1600V/1Min
- 4. Operating temperature: $-40^{\circ}\text{C} \sim +105^{\circ}\text{C}$
- 5. Undimensioned tolerances:

Pitch range in mm		Nominal dimension range in mm						Tolerances	
TO	Over	TO	Over	TO	Over	TO	Over	0.1/10	
6	10	10	24	30	60	100	150		<
± 0.15	± 0.20	± 0.30	± 0.30	± 0.50	± 0.70	± 1.00	± 1.30		$\pm 2'$

6. RoHS Compliance

DETACHED LISTS	PART NO.:	慈溪市美感电子接插件厂 Cixi Meigan Electric Appliance Socket Factory			
	APPD:	NAME: MG48SM-9.5			
	CHKD:	TITLE: CUSTOMER DRAWING			
	DRFT:	DRAWING NO.:		REV	DO
	THIRD ANGLE PROJECTION		MM (INCH)	DO NOT SCALE DRAWING	SHEET 1/1
			SCALE	1:1	

8 7 6 5 4 3 2 1